



Park Hours & Information

Hours

Mount Trashmore is open from 7:30 a.m. until sunset 7 days a week.

Shelter Reservations

To reserve a picnic shelter, contact the Leisure Events Office at (757) 219-2550; 9 a.m. to 4 p.m., Monday through Friday.

Safety

Helmets must be worn to enter and use the Skate Park. The use of protective equipment is strongly recommended.

Guidelines

Help make our park an enjoyable experience for everyone by observing the following :

- No alcoholic beverages are allowed
- Pets must be kept on a leash
- Picnickers must use the grills provided in the park
- Flying of powered rockets or airplanes is not allowed
- Sledding or sliding is prohibited at all times

World renowned Mount Trashmore draws nearly 1 million visitors each year making it one of the most popular recreation areas in Virginia Beach.

For many the park is more than just a destination for family-oriented leisure activities; it is also a model for innovation in natural resource conservation.

Rising 64 feet above sea level and spanning 165 acres, the land Mount Trashmore now occupies was converted from a former landfill into a recreation area.

Mount Trashmore was among the first landfill parks constructed in the world. Since opening to the public in 1973, Mount Trashmore has become a community gathering place and Virginia Beach landmark.



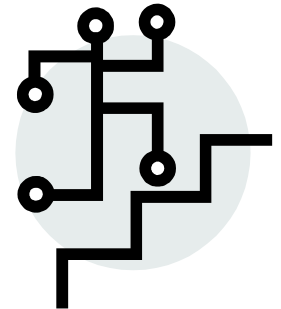
Mount Trashmore

310 Edwin Drive
Virginia Beach, VA 23462

Phone: (757) 473-5237
Fax: (757) 473-5047
TTY: (757) 471-5839



Mount Trashmore Park



Experience the Fun!
Virginia Beach Parks and Recreation

www.VBgov.com/parks

●●● | Mount Trashmore

Skate Park

The Skate Park features an extensive street course flowing from an above ground seven-foot deep bowl. A six inch thick steel reinforced 24,000 square foot concrete slab is framed with treated wood and covered with composite material. The skating surface was manufactured by Skatelite Pro.

Kid's Cove Play Area

This unique playground was designed with ideas from children and constructed through the efforts of over 4,000 community volunteers.

Picnic Shelters

Mount Trashmore features large shelters available for reservation, in addition to other picnic areas. Shelters range in size and have grills available for charcoal cooking. See **PARK HOURS & INFORMATION** for shelter reservation information.

Hiking Trails

Asphalt surfaced trails for walkers and joggers offer scenic views of the lake and landscaped grounds. Trail distances are indicated with mileage markers and begin at the Park Office on the lake side of the park.

Other Park Amenities

- Volleyball Courts
- Water-Wise Gardens
- Vending Machines
- Wheelchair accessible restrooms

